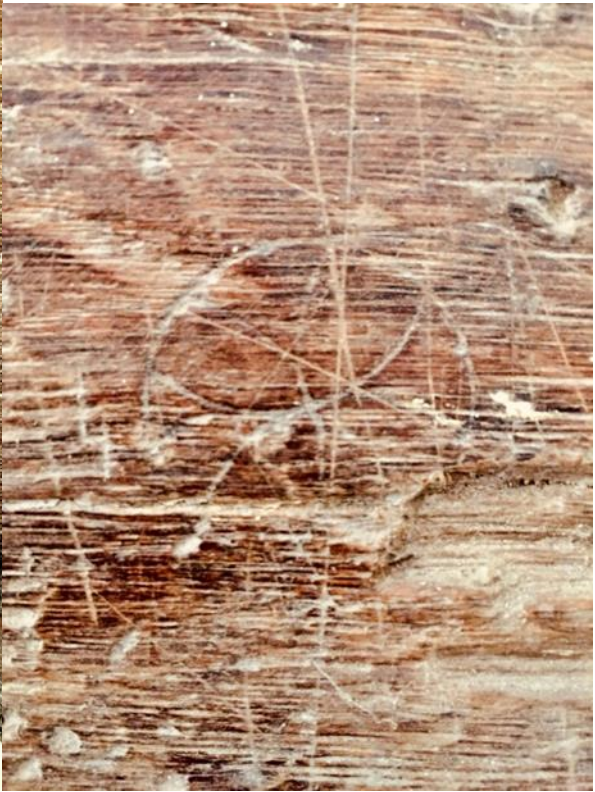
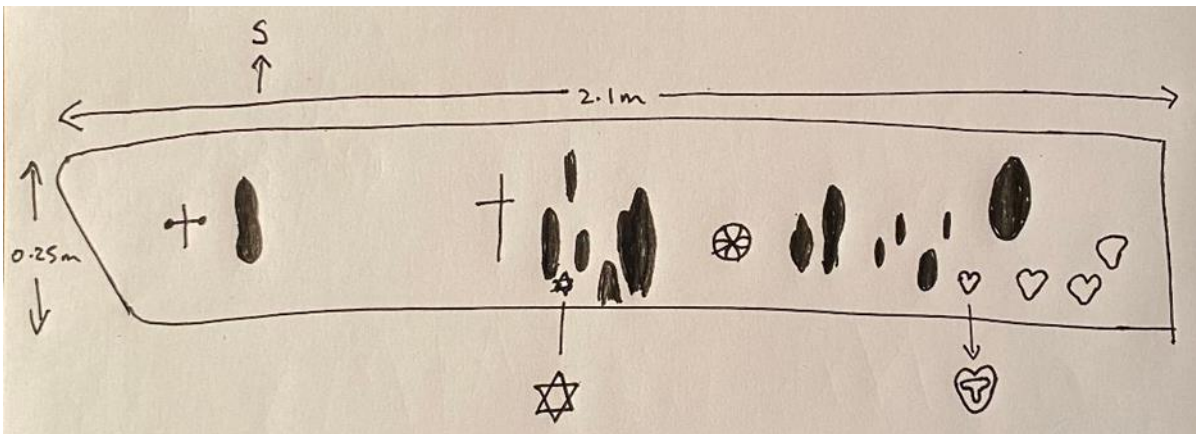


53 Low Street (north of house) South-facing bressummer and small room.

2 Burn marks inverted on door to porch







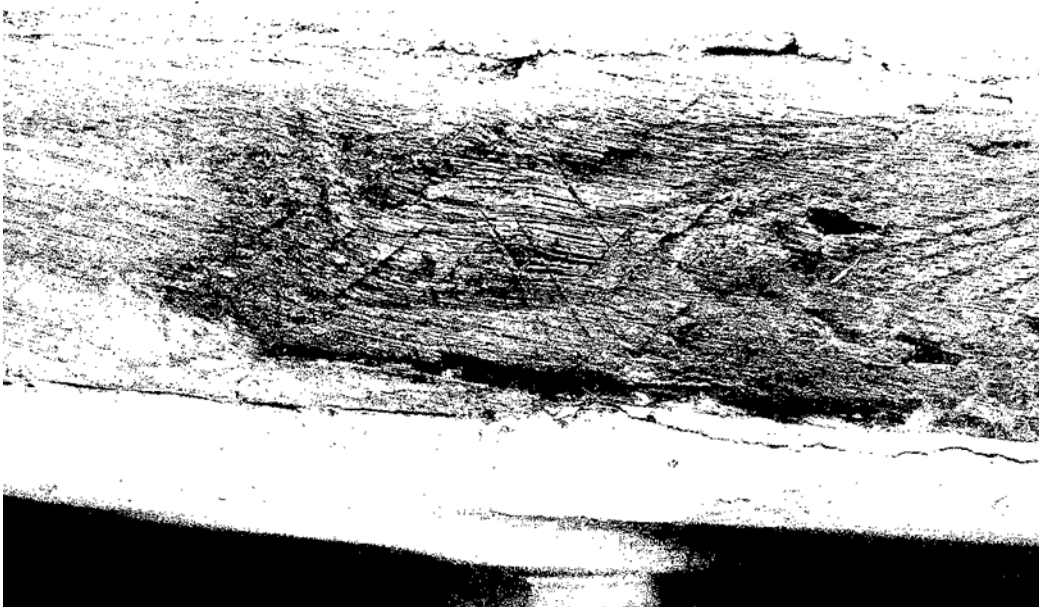
Symbol	Number
M	
AM	
Daisy Wheel	0
Consecration cross	1
Compass drawn circle	0
Butterfly	0
Arrow	0
Mesh	0
Cross	2
Burn	24
Other	Star of David
Stamp	4 small hearts with a T the middle
Comment	



There are many faint scratches on the bressummer but they are mainly not discernible symbols except one. With magnification and manipulation of the image a small star of David symbol can be seen.



53, first floor above door frame rather faint continual repeated W pattern, eroded in places 40cm by 5cm



One faint burn mark in the small room on the first floor.

Garage to the north of 54

Likely to be a core of 18th/19th century construct. Building not present on 1843 tithe map but present on 1883 ordinance survey map. Double circle inscribed on East wall. 30cm in diameter.



54 Low Street cellar – burn mark on partition

